

48V MUSTANG

AMSTG-48070-G1



PARAMETERS

Note: Bulk, Absorption, Float, and Equalize are not applicable to lithium batteries but are included here with the correct numbers to input into your charge controller as they are our most commonly requested parameters.

Charge Voltage: 58.8V

Bulk Voltage: 58.8V (Not Applicable to Lithium Batteries)

Absorption Voltage: 58.8V (Not Applicable to Lithium Batteries)

Absorption Time: 0 Minutes (Not Applicable to Lithium Batteries)

Float Voltage: 58.8V (Not Applicable to Lithium Batteries)

Equalize: Off (Not Applicable to Lithium Batteries)

Low Voltage Cutoff: 47V

High Voltage Cutoff: 58.8V

Suggested Inverter Low Voltage Setting: 47.2V - 50.8V



FREQUENTLY ASKED QUESTIONS

How do I connect this battery into my existing system?

Our product uses a standard 175 electrical connector. A single battery order will include a 175 Connector to Ring Terminal cable for ease of installation.

How many times can I put this battery in parallel / series?

This battery is not series capable but can be connected in parallel up to eight times. Make sure that the total amount of these batteries in your configuration never exceeds eight total batteries. When connecting batteries in parallel, make sure all batteries are within 1 volt of one another.

How long will my battery last, and what do I do at the end of its life?

Lithium Iron Phosphate (LiFePO4) batteries can be cycled from 3000 to 5000 times. If you cycle the battery daily then you can get more than 10 years of use from your battery. When your battery is at the end of its lifespan, contact us and we'll recycle it for you, free of charge!

Can I connect into this battery's BMS to get extra info?

Our BMS is just there to keep your battery safe and healthy, it does not have the ability to network with any charge controllers or inverters for extra read-outs.

What is the warranty on this battery?

We offer a comprehensive 10 year warranty on all of our batteries. You can read more about our warranty at BigBattery.Com/Policies.



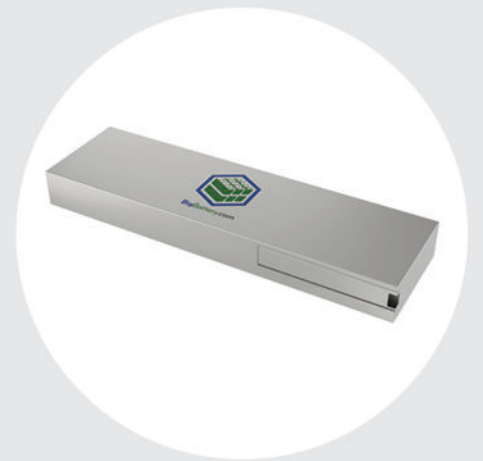
CONTACT US

Phone: (818) 280-3091 **Email:** Sales@BigBattery.com

Hours: Monday through Friday 9:00 AM to 5:00 PM PST

Address: 21314 Lassen St. Chatsworth, CA 91311

Last Revision Date - 5/17/2023



BATTERY SPECS

Chemistry: Voltage:

LiFePO4 48V

kWh: **Amp Hours:**

7 kWh 139 Ah

Operating Voltage Range:

47.2V - 58.8V

Charging Voltage Range:

55.6V - 58V

Max Charging Voltage:

58.8V

⚠ WARNING: Do NOT exceed max charging voltage.

Cell Configuration:

16S

Charge Temperature Range:

0°C - 55°C

Discharge Temperature Range:

-20°C - 55°C

Optimal Discharge Temp. Range:

15°C - 35°C

Storage Temperature Range:

-5°C - 35°C (Max 6 months)

BMS SPECS

Max Continuous Discharge:

120A

Max Continuous Power:

7500W

Max Peak Discharge:

300A (Over 6 Seconds)

Max Charge Current:

45A

BATTERY SIZE

Weight: **Width:**

146 lbs. 39.9 in

Depth: **Height:**

11.6 in 4.4 in